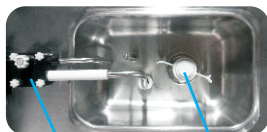




Touch Screen Controls



Air Pump

Mixer

*Product's exterior and specifications can be modified without prior notice.

Product No. _____

HM716

Soft Serve Freezer

Twist , Pump , Heat Treatment

Features

- All the popular soft serve variations from low to non-fat ice creams or Yogurt.
- Two Flavor & one Twist.

Heat Treatment System

- Provides a daily heating and cooling cycle to safely maintain dairy products up to 14 days before a complete disassembly and cleaning is required.

Freezer Cylinder

- Two , 2.8liters (2.96 quart, 0.74 gallons) capacity.

Mix Hopper

- Two , 13 liters (13.8 quart, 2.85 gallons) capacity.
- Maintain the temperature of mix, under 5°C (41°F) in Auto & stand by mode.
- Mixer , Mixing the material to keep the temperature uniformity in hopper.

Air-Pump

- Simplified air/mix pumps deliver the precise amount of air and mix to the freezing cylinders, and reduces operator parts.
- Air-Pump makes soft serve much smoother in hopper.
- Adjustable Overrun from 20% to 80%.
- Separated motor are installed for Air-Pump.

Touch Screen Controls

- Microprocessor touch control are embedded in durable tempered glass panel.
- temperatures in hoppers or freezing cylinder maybe display at any point of operation.
- Draw counter all operator to view number of servings dispensed.
- Mix Low alerts operator to add mix. Audible alarm sound when mix is low. When the mix out flashes, the unit shuts down automatically to prevent damage.
- Current recipe number of days until next brush cleaning is required to assure product safety.
- Heat treatment progressing indicate .
- Current recipe code. When malfunction happening or irregular working.

Standby

- During long no-use period, the standby mode keep product temperature safe in the mix hopper and freezing cylinder.

Options



A



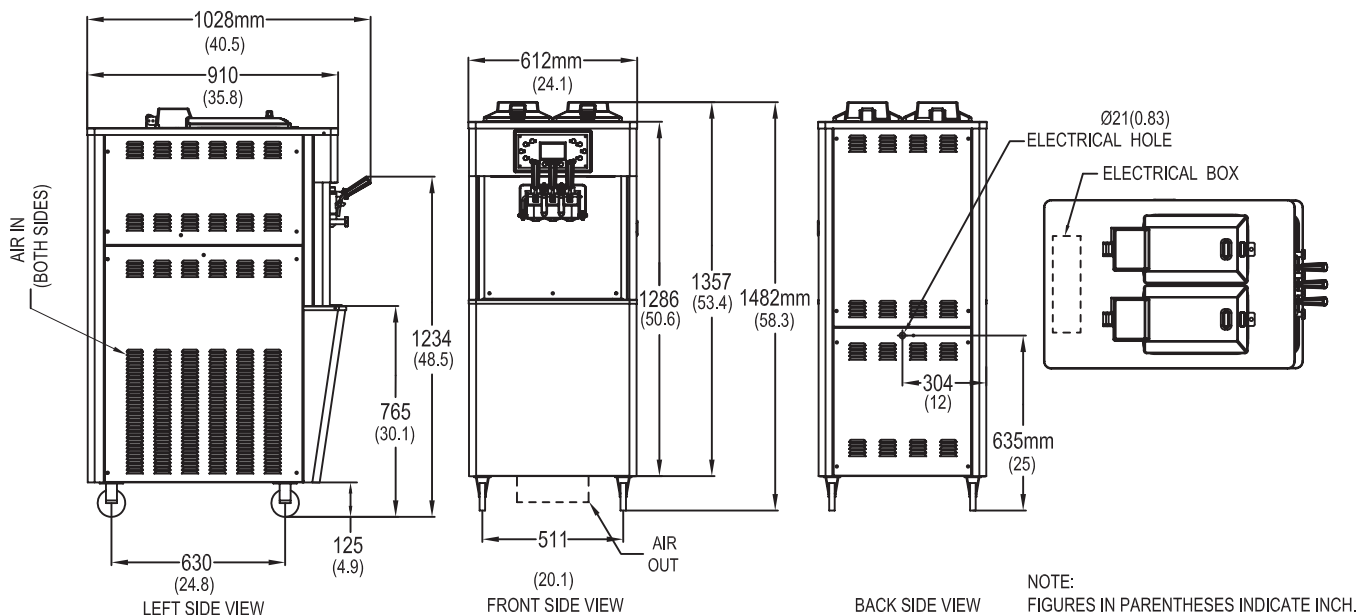
B



- Cone Dispenser • Tent (Sun Umbrella) • Serving Table • Billboard



HM716 Soft Serve Freezer



Exterior

Dimensions	Net.		Packing Size	
	mm	inch	mm	inch
Width	612	24.1	750	29.5
Depth	1028	40.5	1060	46
Height	1482	58.3	1620	63.8

Weight	Net.		Gross.	
	kgs	lbs	kgs	lbs
	280	617	330	726
Volume	0.93 cu. m		1.42 cu. m	
1×20' container	: 16 units			
1×40' container	: 33 units			

Electrical

		Maximum Fuse	Minimum Circuit Ampacity	Poles(P)	Wires(W)
HM716-F01	220-240V/50Hz/1 Air	30	26	2P	3W
HM716-W01	220-240V/50Hz/1 Water	30	24	2P	3W
HM716-F01	208-230V/60Hz/1 Air	30	27	2P	3W
HM716-W01	208-230V/60Hz/1 Water	30	25	2P	3W
HM716-F03	380-415V/50Hz/3N/Air	30	24	3P	5W
HM716-W03	380-415V/50Hz/3N/Water	30	22	3P	5W
HM716-F03	208-230V/60Hz/3 Air	30	27	3P	5W
HM716-W03	208-230V/60Hz/3 Water	30	25	3P	5W

This unit may be manufactured in other electrical characteristics. Refer to the local Hommy Distributor for availability. (For exact electrical information, always refer to the data label of the unit)

Specifications

Refrigeration System

Compressor	No.	BTU	Ref.
Freezing	2 pcs	9500	R404A
Cooling	1 pc	3120	R134A

*Air-Cooling condenser .

*BTUs may vary depending on compressor used.

Beater Motor

Two. 0.75Kw (1.0Hp)

Air Cooled

Minimum 3" (76 mm) around all sides. Install the deflector provided to prevent recirculation of warm air. Minimum air clearances must be met to assure adequate air flow for optimum performance.

Water Cooled

Water inlet and drain connections under side of base 1/2" FPT.

Production Capacity

Max. Production	100L/h (68Kg/h, 150lbs/h)
First Dispensing	5~10min
Consecutive Dispensing	50~90cups(100cc/3.5oz)
Max. Dispensing per hour	800cups(100cc/3.5oz)

*Production Capacity may vary depending on ambient temperature.

*Product's exterior and specifications can be modified without prior notice.

Distributed by

Kunkkukioskit
Jokirannantie 12 b
80710 Lehmo